

# State of Wyoming Corner Record

(In compliance with the *CORNER PERPETUATION AND FILING ACT*, Wyoming Statutes, 1997 Section 33-29-140 et. se., and the Rules and Regulations of the Board of Professional Engineers and Professional Land Surveyors)

Reverse side of this form may be used if more space is needed.

Record of original survey and citation of source of historical information (if corner is lost or obliterated). Description of corner monumentation evidence found and/or monument and accessories established to perpetuate the location of this corner. Sketch of relative location of monument, accessories, and reference points with course and distance to adjacent corner(s) (if determined in this survey). Method and rationale for re-establishment of lost or obliterated corner.

**RECORD:** G.. L. O. survey Alfred M. Rogers in 1873: "80.00 chs, set 20x10x8 Sandstone 15 inches deep, marked 3 notches on south and one notch on east".

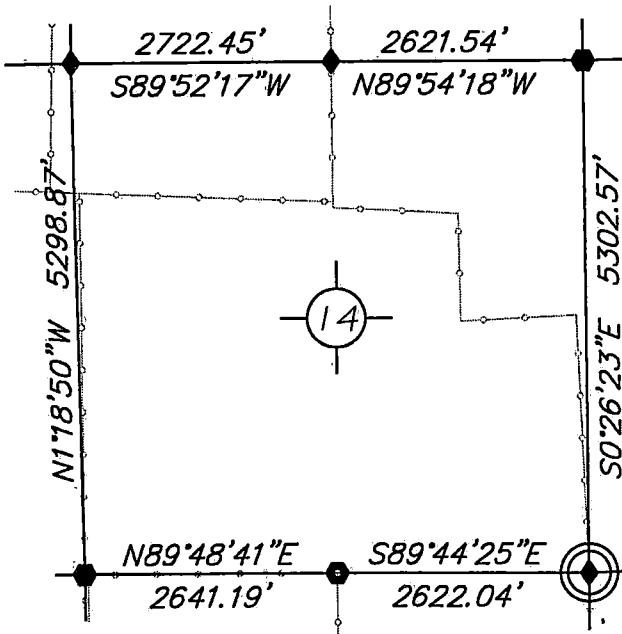
**FOUND:** 8x8x3 Sanstone above ground at N-S fence well marked with 5/8 inch rebar on noth side.

Re-monumentation: nothing required.

Point #	North	East	Elev.
1861232	373220.93	934466.61	4801.27

NAD83, position:

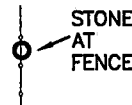
NOTE:  
BEARINGS AND DISTANCES SHOWN HEREON ARE  
BASED UPON GRID USING NAD83 WYOMING EAST  
ZONE AND TRIMBLE R8 GPS OBSERVATION



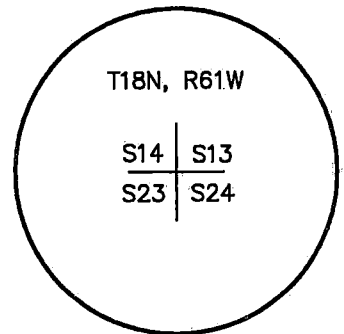
### Monument Location

corner referenced this record =

### SKETCH



LARAMIE COUNTY

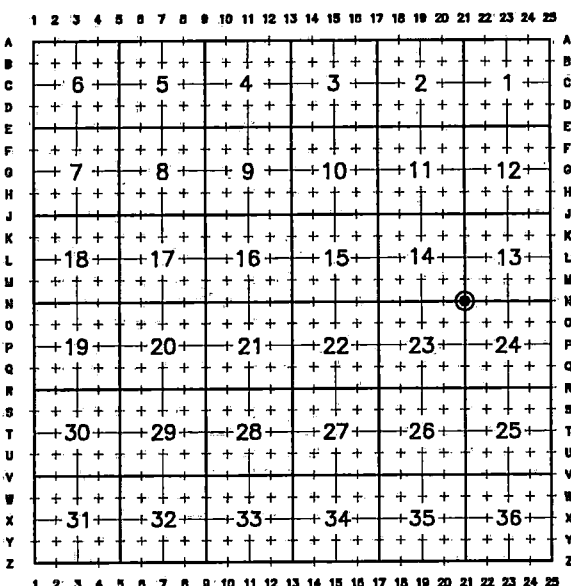


Stone Monument, Inscription shown for Record Reference

Date of Field Work: May 2, 2019

Office Reference: DRG-21744, Pt.1861232

### Cross Index Plat



Firm/Agency, Address

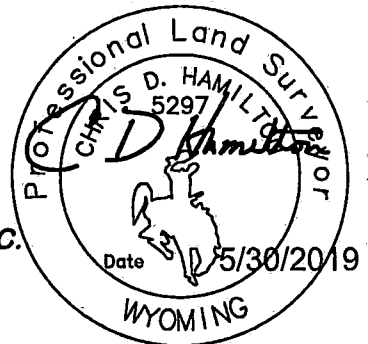
this corner record provided by:

**HAMILTON  
LAND  
SURVEYING**

UNDER CONTRACT TO:

**DRG** **GRIFFIN & ASSOCIATES, INC.**  
1414 ELK ST., SUITE 202  
ROCK SPRINGS, WY 82901  
(307) 362-5028

This corner record was prepared by me  
or under my direction and supervision.  
SEAL & SIGNATURE



T: RECP #: 754742  
C: RECORDED 6/7/2019 AT 1:55 PM BK# 2624 PG# 790  
Debra K. Lee, CLERK OF LARAMIE COUNTY, WY PAGE 1 OF 1

Debra Lee \_\_\_\_\_ Deputy  
County Clerk

STATE of WYOMING, Office of Clerk & Recorder, County of Laramie  
this block provided for county filing documentation

Corner Name: Southwest, Section: 14, T 18N, R 61W, 6th P.M., Cross-Index No.: N-21

SBRPEPLS/PLSW: March 1994; PLSW January 1998

County: LARAMIE, Wyoming